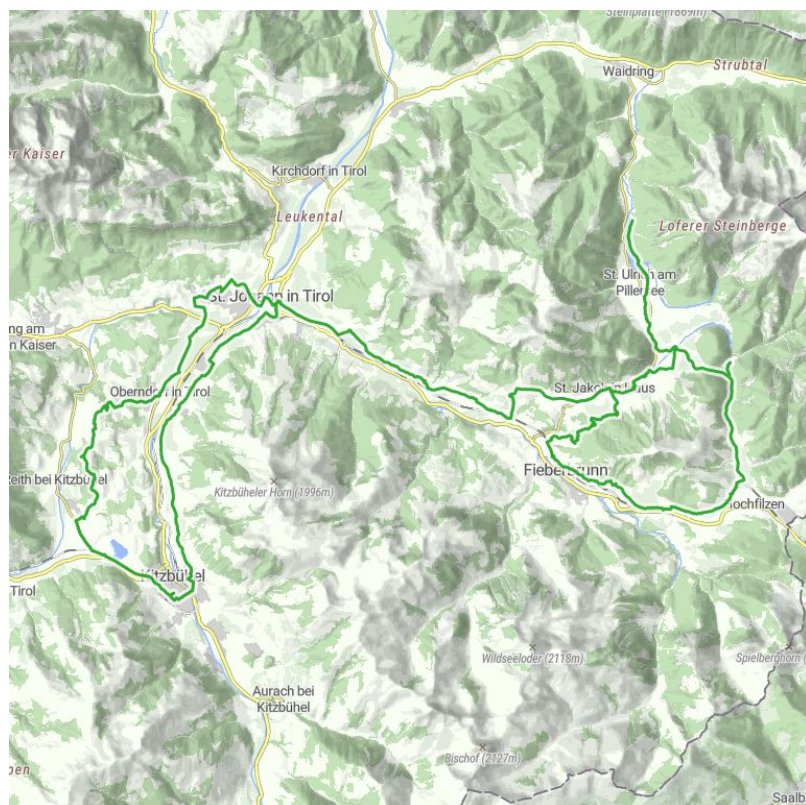


GR1 | Kitzbühel-Pillersee Gravel Loop

Hardcore Gravel Freaks

distance	86,3 km	difficulty	difficult	
altitude meters uphill	1015 m	altitude meters downhill	1016 m	highest point 963 m
starting point:	Zentrum Kitzbühel			
destination point:	Zentrum Kitzbühel			
best season:	MAY, JUN, JUL, AUG, SEP, OCT			



Altitude profile



Description

Start your Kitzbühel adventure on gravel paths winding through traditional rural lanes, perfectly suited for gravel bikers. The gentle initial climb primes your body for the route ahead. Enjoy breathtaking views along the way, before facing the most challenging ascent with a 12% gradient. The paved sections simply add more scenic landscapes to your experience. If you need to cool down, Pillersee lake awaits at your destination. This tour offers a unique mix of gravel fun and the beauty of Tyrol, passing through idyllic villages, ideal for bikers in good shape. An unforgettable experience and a must for every gravel biker!

Authentic traditional lunch spot: Jausenstation Grieseltal

Best viewpoint: Seestüberl at Pillersee

downloads

[GPX FILE](#)

[INTERACTIVE MAP](#)

